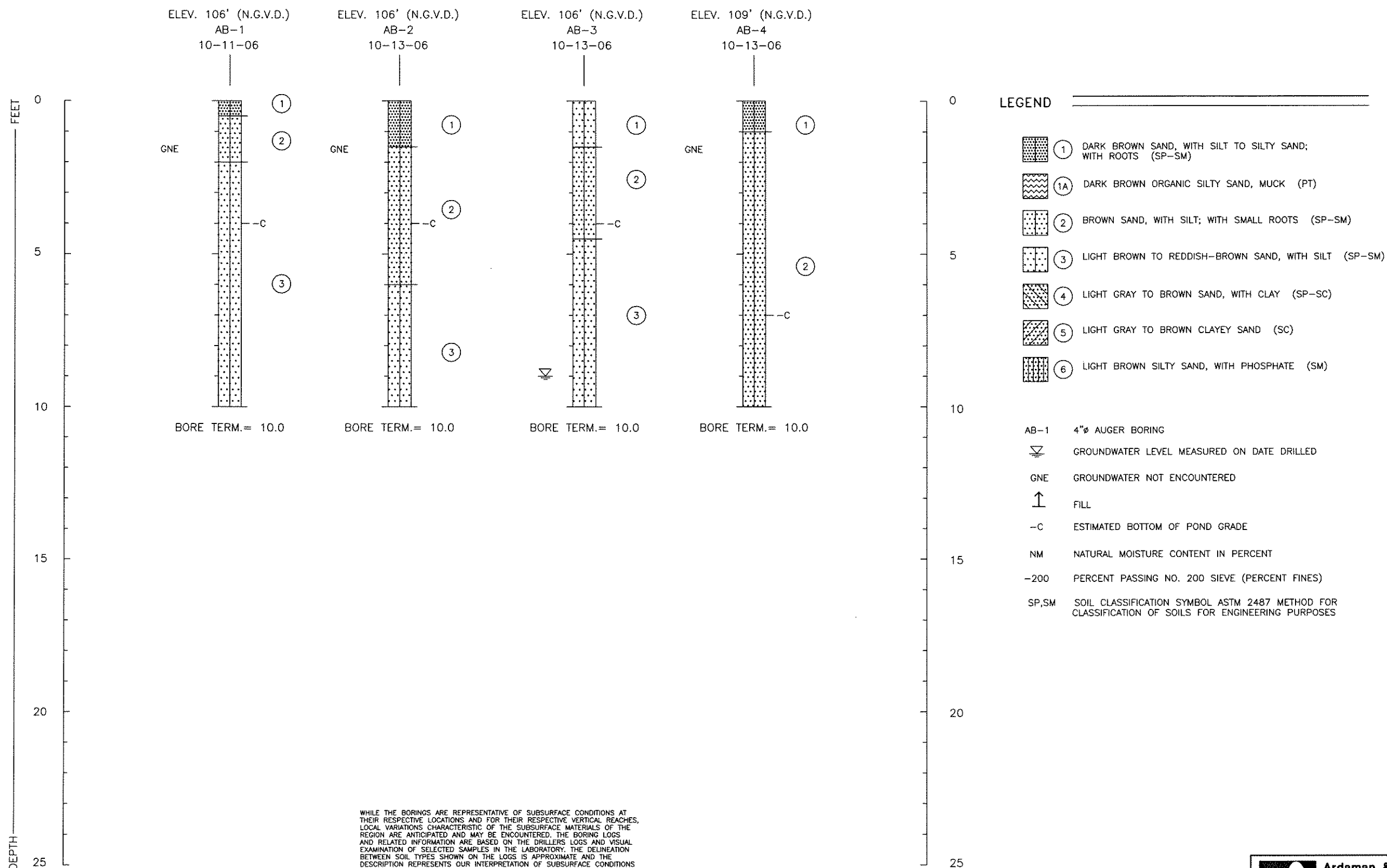


SOIL BORING PROFILES



WHILE THE BORINGS ARE REPRESENTATIVE OF SUBSURFACE CONDITIONS AT THEIR RESPECTIVE LOCATIONS AND FOR THEIR RESPECTIVE VERTICAL REACHES, LOCAL VARIATIONS CHARACTERISTIC OF THE SUBSURFACE MATERIALS OF THE REGION ARE ANTICIPATED AND MAY BE ENCOUNTERED. THE BORING LOGS AND RELATED INFORMATION ARE BASED ON THE DRILLERS LOGS AND VISUAL EXAMINATION OF SELECTED SAMPLES IN THE LABORATORY. THE DELINEATION BETWEEN SOIL TYPES SHOWN ON THE LOGS IS APPROXIMATE AND THE DESCRIPTION REPRESENTS OUR INTERPRETATION OF SUBSURFACE CONDITIONS AT THE DESIGNATED BORING LOCATIONS ON THE PARTICULAR DATE DRILLED.

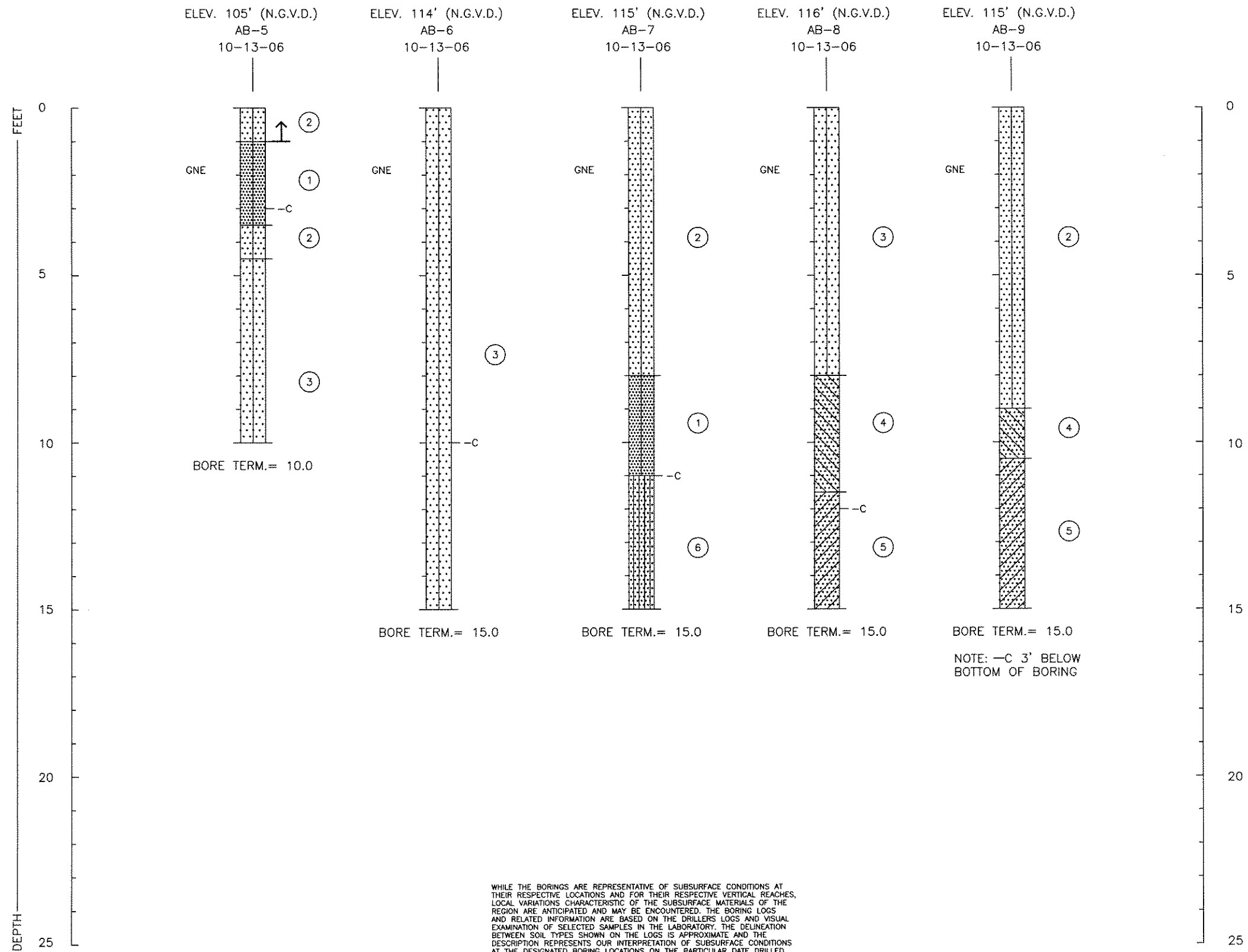
GROUNDWATER ELEVATIONS SHOWN ON THE BORING LOGS REPRESENT GROUNDWATER SURFACES ENCOUNTERED ON THE DATES SHOWN. FLUCTUATIONS IN WATER TABLE LEVELS SHOULD BE ANTICIPATED THROUGHOUT THE YEAR. ABSENCE OF WATER DATA ON CERTAIN BORINGS IMPLIES THAT NO GROUNDWATER DATA IS AVAILABLE, BUT DOES NOT NECESSARILY MEAN THAT GROUNDWATER WILL NOT BE ENCOUNTERED AT THOSE LOCATIONS OR WITHIN THE VERTICAL REACHES OF THESE BORINGS IN THE FUTURE.

DATE DRILLED: SHOWN ABOVE

C:\P2005\04-9244\04-9244-3\10-25-06\08-40\PS-1\102005\NPS

Ardaman & Associates, Inc. Geotechnical, Environmental and Materials Consultants		
SOIL BORING PROFILES SADDLE CREEK COMMUNITY SILVER COMPANIES, BARTOW BARTOW, POLK COUNTY, FLORIDA		
DRAWN BY: <i>MPS</i>	CHECKED BY: <i>[Signature]</i>	DATE: 11-16-06
FILE NO. 04-9244	APPROVED BY: <i>[Signature]</i>	FIG. NO. 2

SOIL BORING PROFILES



WHILE THE BORINGS ARE REPRESENTATIVE OF SUBSURFACE CONDITIONS AT THEIR RESPECTIVE LOCATIONS AND FOR THEIR RESPECTIVE VERTICAL REACHES, LOCAL VARIATIONS CHARACTERISTIC OF THE SUBSURFACE MATERIALS OF THE REGION ARE ANTICIPATED AND MAY BE ENCOUNTERED. THE BORING LOGS AND RELATED INFORMATION ARE BASED ON THE DRILLERS LOGS AND VISUAL EXAMINATION OF SELECTED SAMPLES IN THE LABORATORY. THE DELINEATION BETWEEN SOIL TYPES SHOWN ON THE LOGS IS APPROXIMATE AND THE DESCRIPTION REPRESENTS OUR INTERPRETATION OF SUBSURFACE CONDITIONS AT THE DESIGNATED BORING LOCATIONS ON THE PARTICULAR DATE DRILLED.

GROUNDWATER ELEVATIONS SHOWN ON THE BORING LOGS REPRESENT GROUNDWATER SURFACES ENCOUNTERED ON THE DATES SHOWN. FLUCTUATIONS IN WATER TABLE LEVELS SHOULD BE ANTICIPATED THROUGHOUT THE YEAR. ABSENCE OF WATER DATA ON CERTAIN BORINGS IMPLIES THAT NO GROUNDWATER DATA IS AVAILABLE, BUT DOES NOT NECESSARILY MEAN THAT GROUNDWATER WILL NOT BE ENCOUNTERED AT THOSE LOCATIONS OR WITHIN THE VERTICAL REACHES OF THESE BORINGS IN THE FUTURE.

DATE DRILLED: SHOWN ABOVE

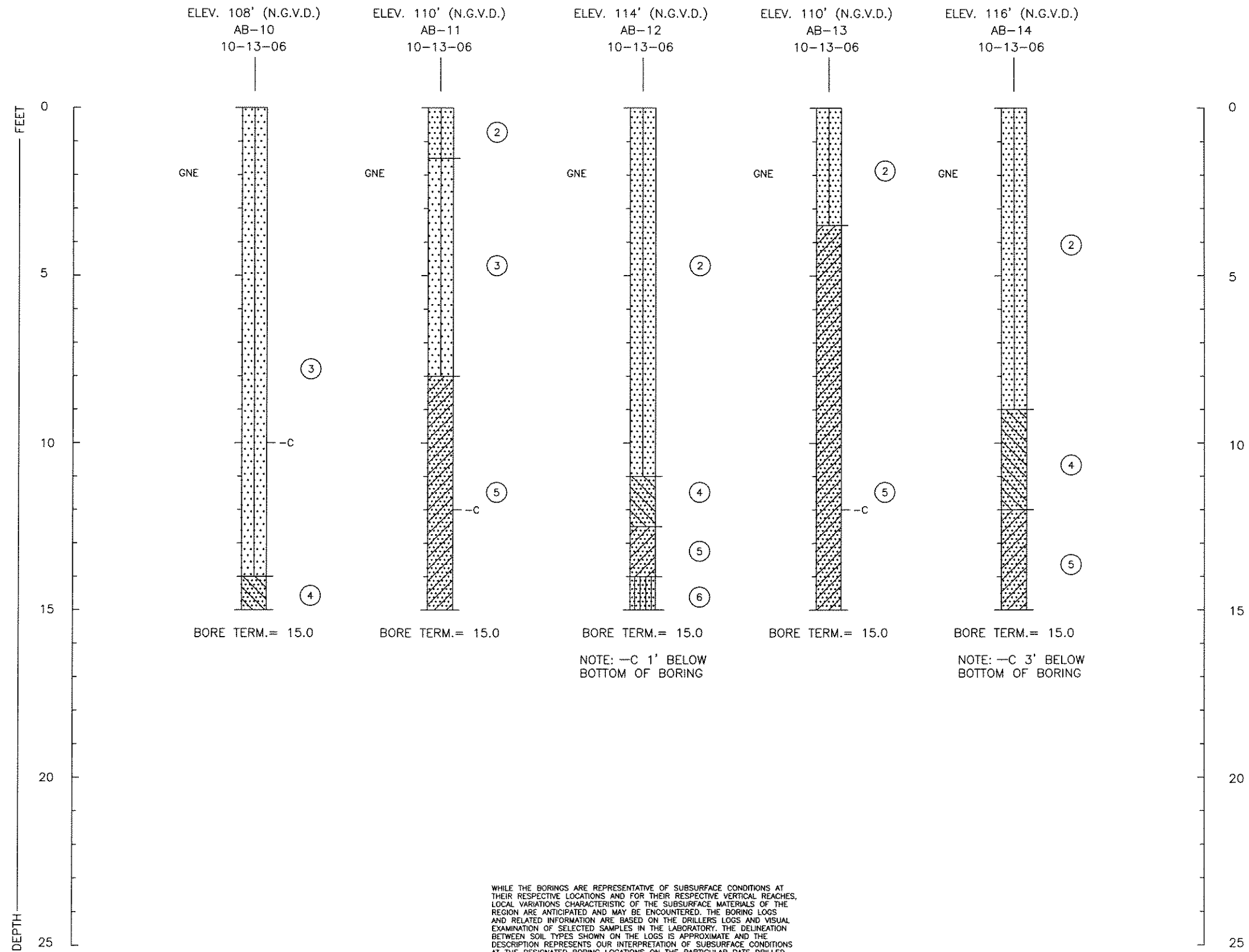
Ardaman & Associates, Inc.
Geotechnical, Environmental and Materials Consultants

SOIL BORING PROFILES
SADDLE CREEK COMMUNITY
SILVER COMPANIES, BARTOW
BARTOW, POLK COUNTY, FLORIDA

DRAWN BY: <i>MPS</i>	CHECKED BY: <i>[Signature]</i>	DATE: 11-16-06
FILE NO. 04-9244	APPROVED BY: <i>[Signature]</i>	FIG. NO. 3

C:\P2005\04-9244\04-9244-A\10-25-06\08-40\PS-1\F2005.MPS


SOIL BORING PROFILES



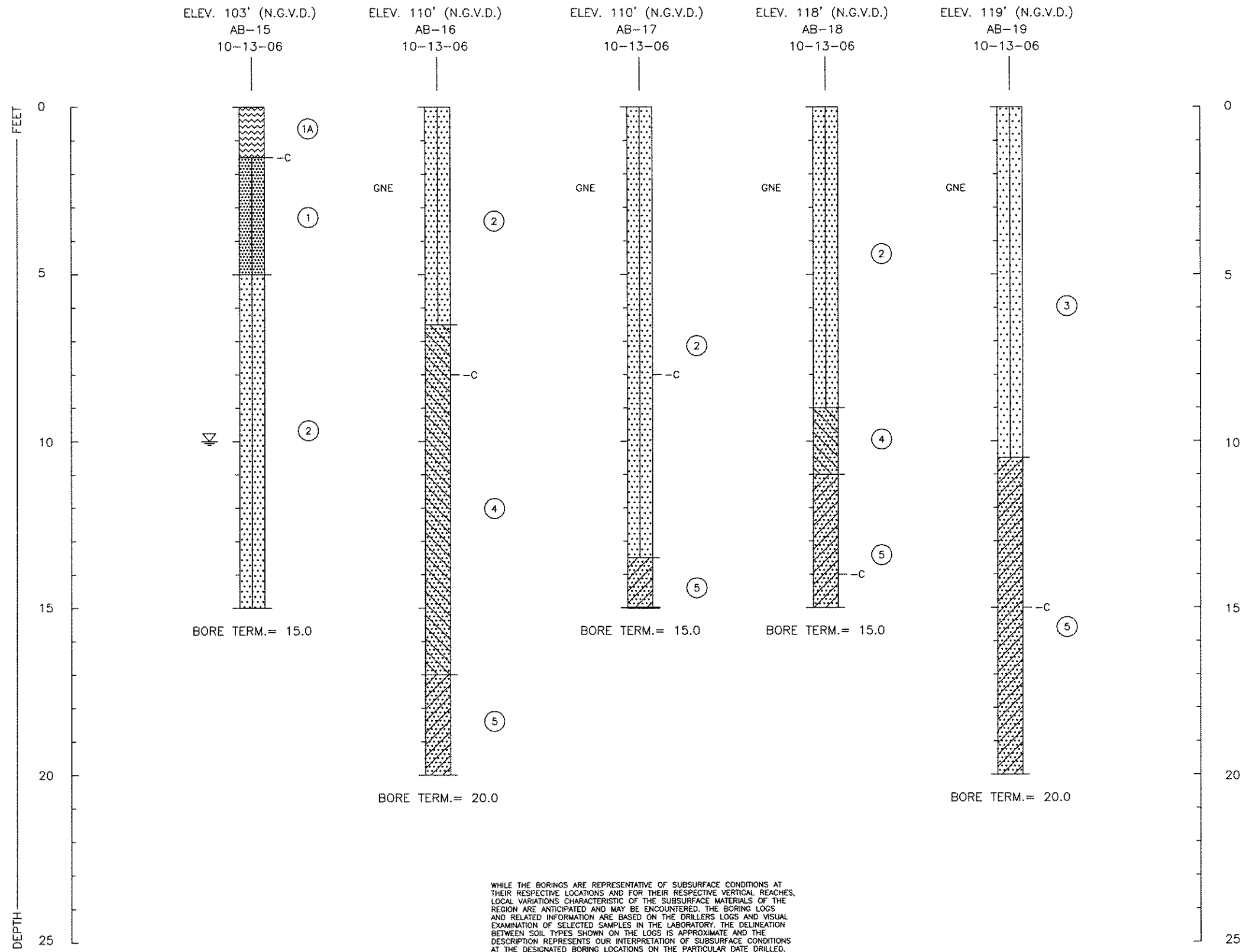
WHILE THE BORINGS ARE REPRESENTATIVE OF SUBSURFACE CONDITIONS AT THEIR RESPECTIVE LOCATIONS AND FOR THEIR RESPECTIVE VERTICAL REACHES, LOCAL VARIATIONS CHARACTERISTIC OF THE SUBSURFACE MATERIALS OF THE REGION ARE ANTICIPATED AND MAY BE ENCOUNTERED. THE BORING LOGS AND RELATED INFORMATION ARE BASED ON THE DRILLERS LOGS AND VISUAL EXAMINATION OF SELECTED SAMPLES IN THE LABORATORY. THE DELINEATION BETWEEN SOIL TYPES SHOWN ON THE LOGS IS APPROXIMATE AND THE DESCRIPTION REPRESENTS OUR INTERPRETATION OF SUBSURFACE CONDITIONS AT THE DESIGNATED BORING LOCATIONS ON THE PARTICULAR DATE DRILLED.

GROUNDWATER ELEVATIONS SHOWN ON THE BORING LOGS REPRESENT GROUNDWATER SURFACES ENCOUNTERED ON THE DATES SHOWN. FLUCTUATIONS IN WATER TABLE LEVELS SHOULD BE ANTICIPATED THROUGHOUT THE YEAR. ABSENCE OF WATER DATA ON CERTAIN BORINGS IMPLIES THAT NO GROUNDWATER DATA IS AVAILABLE, BUT DOES NOT NECESSARILY MEAN THAT GROUNDWATER WILL NOT BE ENCOUNTERED AT THOSE LOCATIONS OR WITHIN THE VERTICAL REACHES OF THESE BORINGS IN THE FUTURE.

DATE DRILLED: SHOWN ABOVE

 Ardaman & Associates, Inc. Geotechnical, Environmental and Materials Consultants		
SOIL BORING PROFILES SADDLE CREEK COMMUNITY SILVER COMPANIES, BARTOW BARTOW, POLK COUNTY, FLORIDA		
DRAWN BY: <i>MFS</i>	CHECKED BY: <i>[Signature]</i>	DATE: 11-16-06
FILE NO. 04-9244	APPROVED BY: <i>[Signature]</i>	FIG. NO. 4

SOIL BORING PROFILES




WHILE THE BORINGS ARE REPRESENTATIVE OF SUBSURFACE CONDITIONS AT THEIR RESPECTIVE LOCATIONS AND FOR THEIR RESPECTIVE VERTICAL REACHES, LOCAL VARIATIONS CHARACTERISTIC OF THE SUBSURFACE MATERIALS OF THE REGION ARE ANTICIPATED AND MAY BE ENCOUNTERED. THE BORING LOGS AND RELATED INFORMATION ARE BASED ON THE DRILLERS LOGS AND VISUAL EXAMINATION OF SELECTED SAMPLES IN THE LABORATORY. THE DELINEATION BETWEEN SOIL TYPES SHOWN ON THE LOGS IS APPROXIMATE AND THE DESCRIPTION REPRESENTS OUR INTERPRETATION OF SUBSURFACE CONDITIONS AT THE DESIGNATED BORING LOCATIONS ON THE PARTICULAR DATE DRILLED.

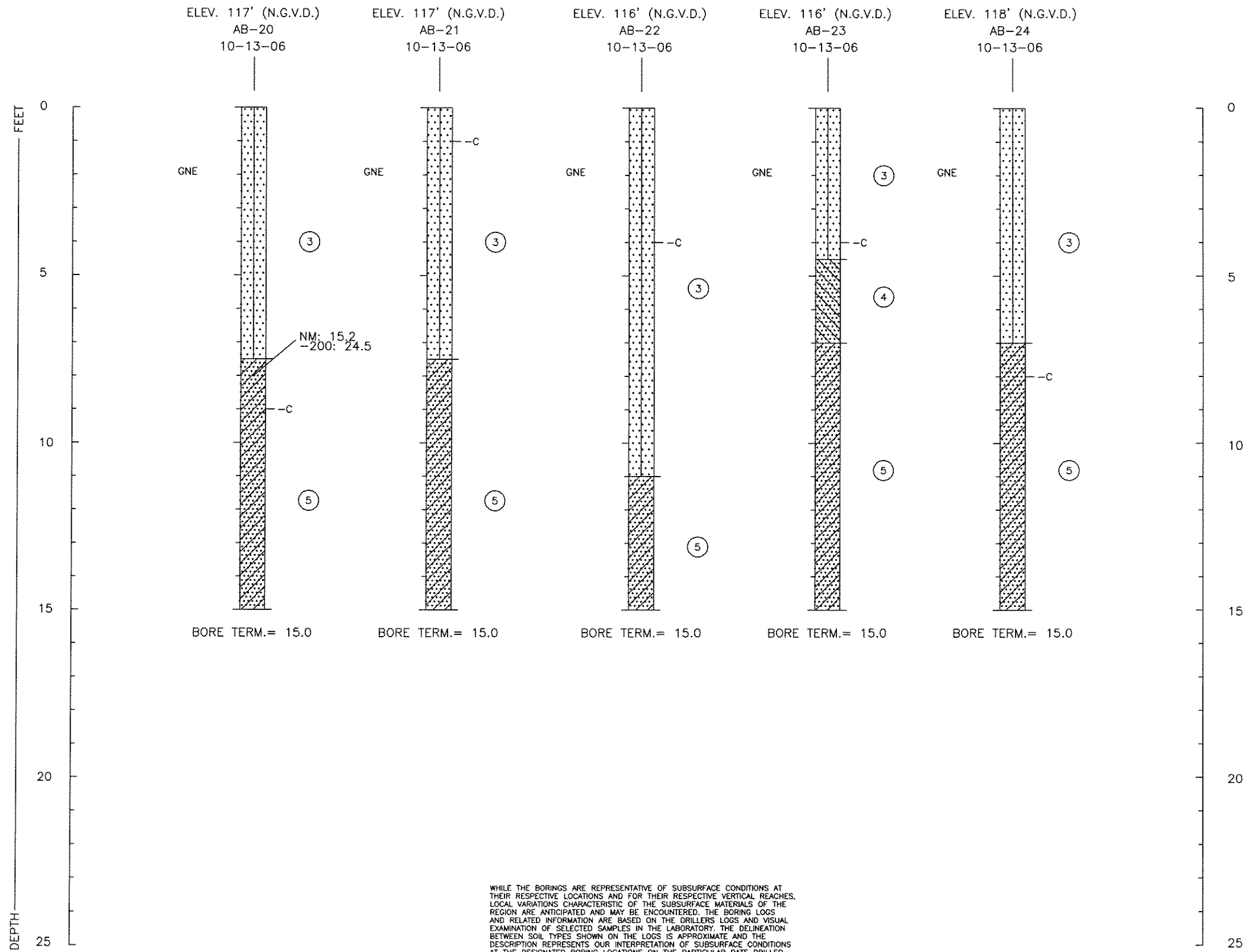
GROUNDWATER ELEVATIONS SHOWN ON THE BORING LOGS REPRESENT GROUNDWATER SURFACES ENCOUNTERED ON THE DATES SHOWN. FLUCTUATIONS IN WATER TABLE LEVELS SHOULD BE ANTICIPATED THROUGHOUT THE YEAR. ABSENCE OF WATER DATA ON CERTAIN BORINGS IMPLIES THAT NO GROUNDWATER DATA IS AVAILABLE, BUT DOES NOT NECESSARILY MEAN THAT GROUNDWATER WILL NOT BE ENCOUNTERED AT THOSE LOCATIONS OR WITHIN THE VERTICAL REACHES OF THESE BORINGS IN THE FUTURE

DATE DRILLED: SHOWN ABOVE

C:\R2005\04-9244\04-9244-6\10-25-06\08-40\PS-1\12005.NPS

 Ardaman & Associates, Inc. Geotechnical, Environmental and Materials Consultants		
SOIL BORING PROFILES SADDLE CREEK COMMUNITY SILVER COMPANIES, BARTOW BARTOW, POLK COUNTY, FLORIDA		
DRAWN BY: <i>MFS</i>	CHECKED BY: <i>[Signature]</i>	DATE: 11-16-06
FILE NO. 04-9244	APPROVED BY: <i>[Signature]</i>	FIG. NO. 5

SOIL BORING PROFILES



WHILE THE BORINGS ARE REPRESENTATIVE OF SUBSURFACE CONDITIONS AT THEIR RESPECTIVE LOCATIONS AND FOR THEIR RESPECTIVE VERTICAL REACHES, LOCAL VARIATIONS CHARACTERISTIC OF THE SUBSURFACE MATERIALS OF THE REGION ARE ANTICIPATED AND MAY BE ENCOUNTERED. THE BORING LOGS AND RELATED INFORMATION ARE BASED ON THE DRILLERS LOGS AND VISUAL EXAMINATION OF SELECTED SAMPLES IN THE LABORATORY. THE DELINEATION BETWEEN SOIL TYPES SHOWN ON THE LOGS IS APPROXIMATE AND THE DESCRIPTION REPRESENTS OUR INTERPRETATION OF SUBSURFACE CONDITIONS AT THE DESIGNATED BORING LOCATIONS ON THE PARTICULAR DATE DRILLED.

GROUNDWATER ELEVATIONS SHOWN ON THE BORING LOGS REPRESENT GROUNDWATER SURFACES ENCOUNTERED ON THE DATES SHOWN. FLUCTUATIONS IN WATER TABLE LEVELS SHOULD BE ANTICIPATED THROUGHOUT THE YEAR. ABSENCE OF WATER DATA ON CERTAIN BORINGS IMPLIES THAT NO GROUNDWATER DATA IS AVAILABLE, BUT DOES NOT NECESSARILY MEAN THAT GROUNDWATER WILL NOT BE ENCOUNTERED AT THOSE LOCATIONS OR WITHIN THE VERTICAL REACHES OF THESE BORINGS IN THE FUTURE.

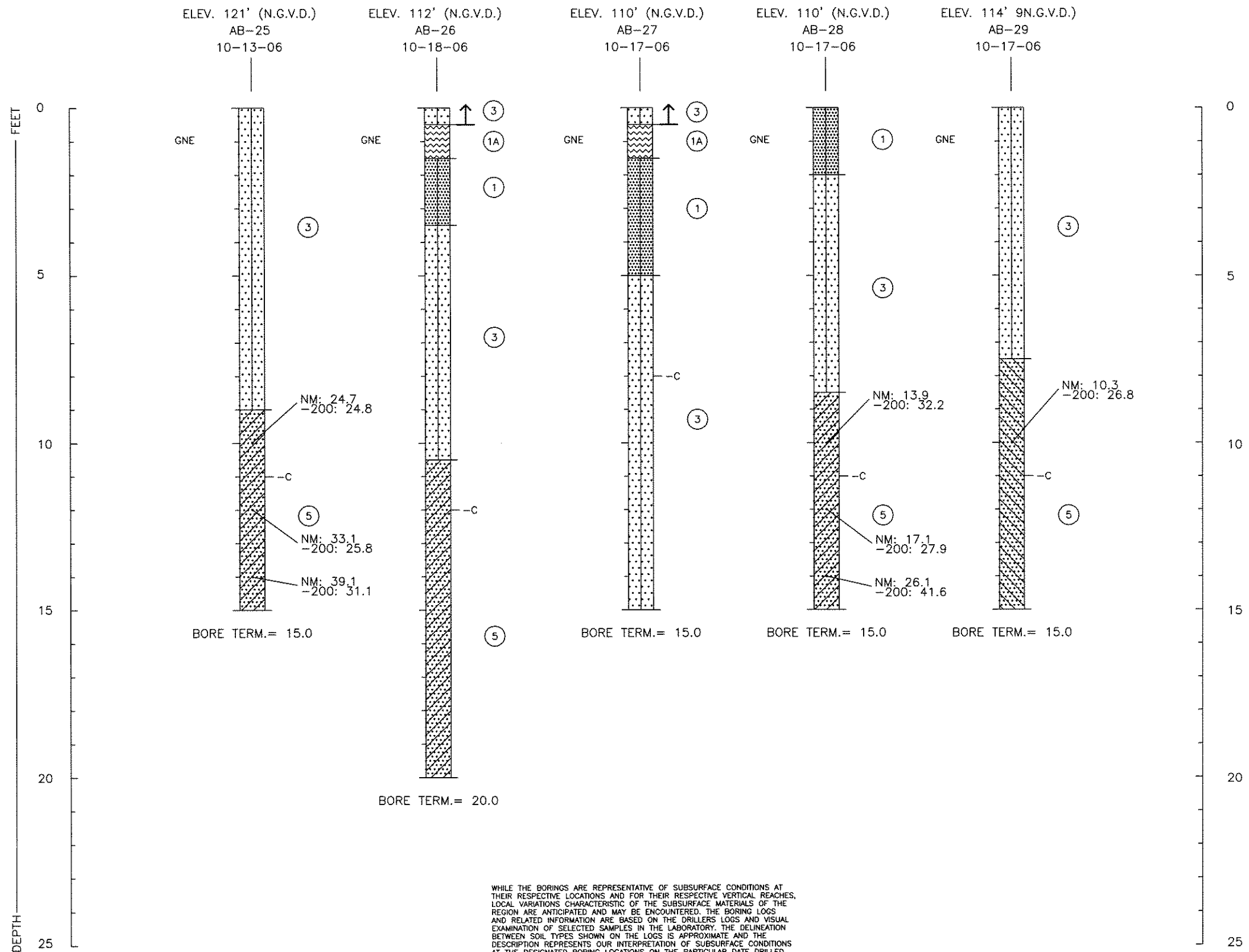
DATE DRILLED: SHOWN ABOVE

Ardaman & Associates, Inc.
Geotechnical, Environmental and
Materials Consultants

SOIL BORING PROFILES
SADDLE CREEK COMMUNITY
SILVER COMPANIES, BARTOW
BARTOW, POLK COUNTY, FLORIDA

DRAWN BY: <i>MTS</i>	CHECKED BY: <i>[Signature]</i>	DATE: 11-16-06
FILE NO. 04-9244	APPROVED BY: <i>[Signature]</i>	FIG. NO. 6

SOIL BORING PROFILES



WHILE THE BORINGS ARE REPRESENTATIVE OF SUBSURFACE CONDITIONS AT THEIR RESPECTIVE LOCATIONS AND FOR THEIR RESPECTIVE VERTICAL REACHES, LOCAL VARIATIONS CHARACTERISTIC OF THE SUBSURFACE MATERIALS OF THE REGION ARE ANTICIPATED AND MAY BE ENCOUNTERED. THE BORING LOGS AND RELATED INFORMATION ARE BASED ON THE DRILLERS LOGS AND VISUAL EXAMINATION OF SELECTED SAMPLES IN THE LABORATORY. THE DELINEATION BETWEEN SOIL TYPES SHOWN ON THE LOGS IS APPROXIMATE AND THE DESCRIPTION REPRESENTS OUR INTERPRETATION OF SUBSURFACE CONDITIONS AT THE DESIGNATED BORING LOCATIONS ON THE PARTICULAR DATE DRILLED.

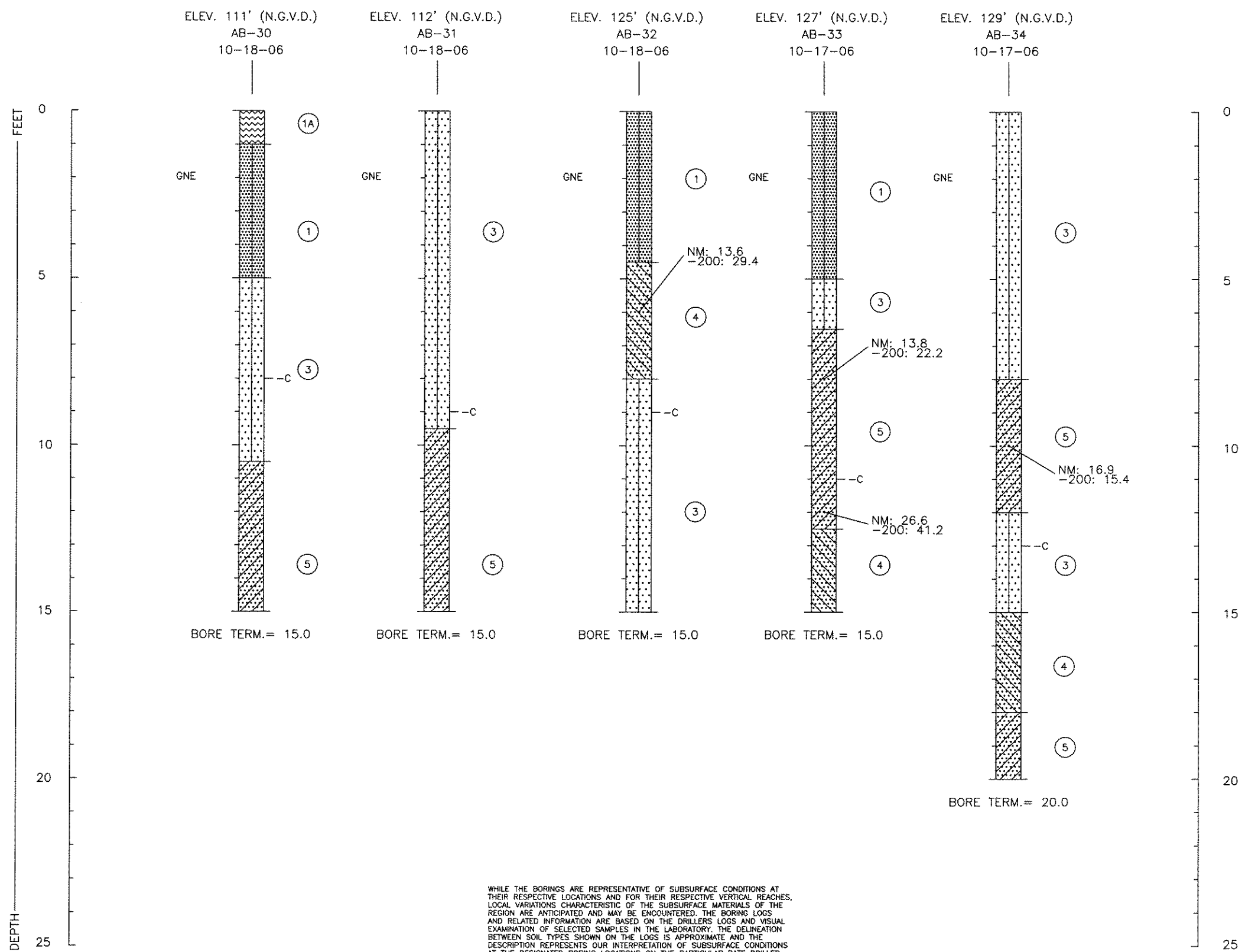
GROUNDWATER ELEVATIONS SHOWN ON THE BORING LOGS REPRESENT GROUNDWATER SURFACES ENCOUNTERED ON THE DATES SHOWN. FLUCTUATIONS IN WATER TABLE LEVELS SHOULD BE ANTICIPATED THROUGHOUT THE YEAR. ABSENCE OF WATER DATA ON CERTAIN BORINGS IMPLIES THAT NO GROUNDWATER DATA IS AVAILABLE, BUT DOES NOT NECESSARILY MEAN THAT GROUNDWATER WILL NOT BE ENCOUNTERED AT THOSE LOCATIONS OR WITHIN THE VERTICAL REACHES OF THESE BORINGS IN THE FUTURE

DATE DRILLED: SHOWN ABOVE

C:\R2005\04-9244\04-9244-8\10-25-06\08-40\PS-1\R2005\NFS

Ardaman & Associates, Inc. Geotechnical, Environmental and Materials Consultants		
SOIL BORING PROFILES SADDLE CREEK COMMUNITY SILVER COMPANIES, BARTOW BARTOW, POLK COUNTY, FLORIDA		
DRAWN BY: <i>MFS</i> FILE NO. 04-9244	CHECKED BY: <i>[Signature]</i> APPROVED BY: <i>[Signature]</i>	DATE: 11-16-06 FIG. NO. 7

SOIL BORING PROFILES



WHILE THE BORINGS ARE REPRESENTATIVE OF SUBSURFACE CONDITIONS AT THEIR RESPECTIVE LOCATIONS AND FOR THEIR RESPECTIVE VERTICAL REACHES, LOCAL VARIATIONS CHARACTERISTIC OF THE SUBSURFACE MATERIALS OF THE REGION ARE ANTICIPATED AND MAY BE ENCOUNTERED. THE BORING LOGS AND RELATED INFORMATION ARE BASED ON THE DRILLERS LOGS AND VISUAL EXAMINATION OF SELECTED SAMPLES IN THE LABORATORY. THE DELINEATION BETWEEN SOIL TYPES SHOWN ON THE LOGS IS APPROXIMATE AND THE DESCRIPTION REPRESENTS OUR INTERPRETATION OF SUBSURFACE CONDITIONS AT THE DESIGNATED BORING LOCATIONS ON THE PARTICULAR DATE DRILLED.

GROUNDWATER ELEVATIONS SHOWN ON THE BORING LOGS REPRESENT GROUNDWATER SURFACES ENCOUNTERED ON THE DATES SHOWN. FLUCTUATIONS IN WATER TABLE LEVELS SHOULD BE ANTICIPATED THROUGHOUT THE YEAR. ABSENCE OF WATER DATA ON CERTAIN BORINGS IMPLIES THAT NO GROUNDWATER DATA IS AVAILABLE, BUT DOES NOT NECESSARILY MEAN THAT GROUNDWATER WILL NOT BE ENCOUNTERED AT THOSE LOCATIONS OR WITHIN THE VERTICAL REACHES OF THESE BORINGS IN THE FUTURE.

DATE DRILLED: SHOWN ABOVE

C:\R2006\04-9244\04-9244-9\10-25-06\0640\PS-1\R2006.VPS

Ardaman & Associates, Inc. Geotechnical, Environmental and Materials Consultants		
SOIL BORING PROFILES SADDLE CREEK COMMUNITY SILVER COMPANIES, BARTOW BARTOW, POLK COUNTY, FLORIDA		
DRAWN BY: <i>MPS</i>	CHECKED BY: <i>CO</i>	DATE: 11-16-06
FILE NO. 04-9244	APPROVED BY: <i>[Signature]</i>	FIG. NO. 8